

# EL CABALLA

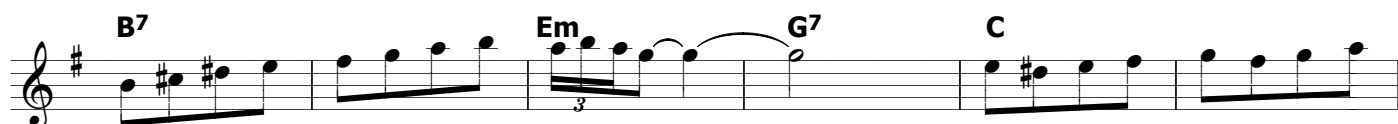
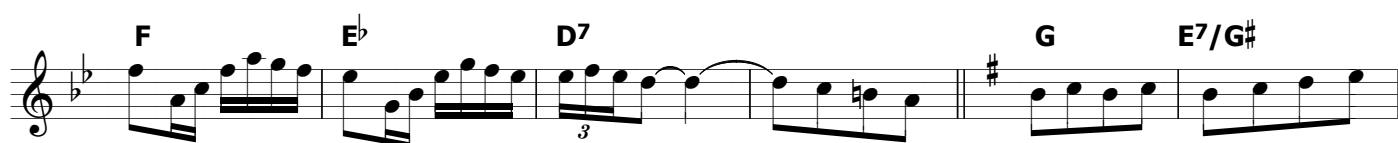
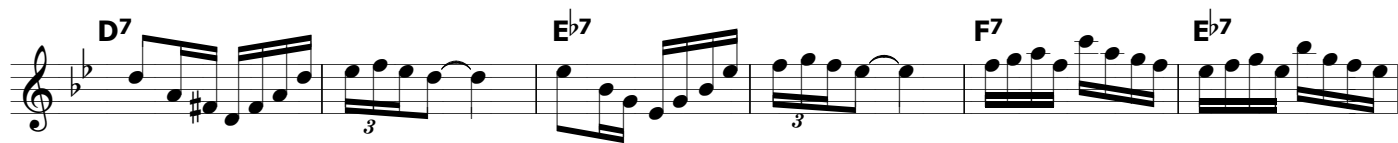
The musical score for "EL CABALLA" is written in 2/4 time and consists of ten staves of music. The key signature has two flats (Bb and Eb). The score includes various chords and rhythmic patterns:

- Staff 1:** Chords: D7, Gm, C7, F, Eb7. Features eighth-note patterns and a quarter note.
- Staff 2:** Chords: D7, Gm, C7, F. Includes a triplet of eighth notes.
- Staff 3:** Chords: Eb7, D7, D7, Eb7. Features eighth-note patterns and a triplet of eighth notes.
- Staff 4:** Chords: D7, Eb7, D7. Includes a triplet of eighth notes.
- Staff 5:** Chords: Eb7, D7, Eb7. Features eighth-note patterns and triplets of eighth notes.
- Staff 6:** Chords: D7, Eb7, D7. Includes a triplet of eighth notes.
- Staff 7:** Chords: Eb7, D7, Eb7. Features eighth-note patterns and a triplet of eighth notes.
- Staff 8:** Chords: D7, Eb7, D7. Includes a triplet of eighth notes.
- Staff 9:** Chords: D7, Eb7, D7. Features eighth-note patterns and a triplet of eighth notes.

# EL CABALLA

P2

MUSIQUE DE : C. LAMPIDECCHIA



FIN